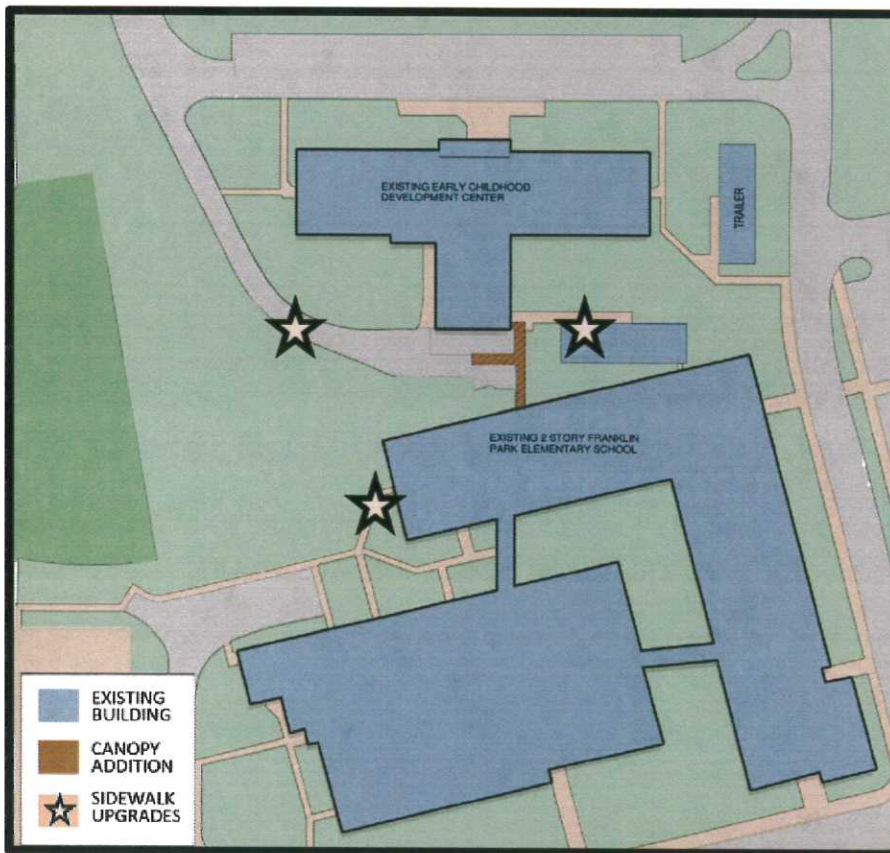




FRANKLIN PARK SCHOOL

PLAN TO EXPAND & CONVERT INTO PK-5

The **ONE LESS MOVE** Referendum Plan improves Franklin Township's Schools by adding additional space for our enormous* student enrollment growth and providing needed repair of aging buildings. Below are the improvements to our school.



FRANKLIN PARK STUDENTS WILL GET

- To remain in their building through 5th Grade
- To return to local area schools
- Less crowded classrooms
- No students in trailers
- New covered canopy between Main Building & Early Childhood Center for safety
- Repaired parking lots & sidewalks
- Electrical upgrades
- Fire Alarm upgrades

* By 2017-2018 there will be 700+ more students in our District due to new housing development

VOTE ON DECEMBER 9, 2014

FOR THE FUTURE OF OUR STUDENTS AT FRANKLIN PARK!

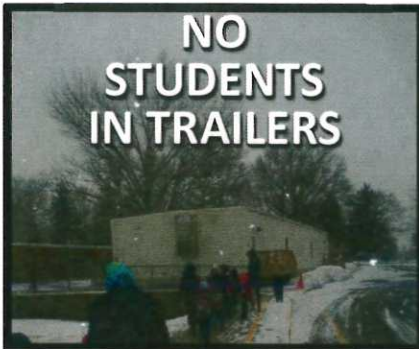


FRANKLIN PARK SCHOOL

HIGHLIGHTS OF IMPROVEMENTS TO OUR SCHOOL

THE NEED...

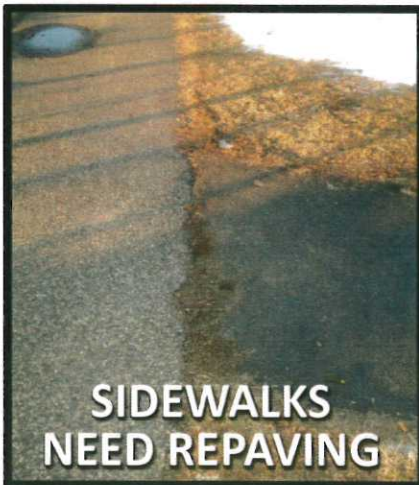
Connection needed between Franklin Park & Franklin Annex, especially in inclement weather



NO STUDENTS IN TRAILERS



COVERED CANOPY BETWEEN BUILDINGS



SIDEWALKS NEED REPAVING

Improvements to sidewalks needed for safety



Electrical panels and fire alarms need updating

THE SOLUTION

✓ A new covered canopy

linking Franklin Park School to the Early Childhood Center!

✓ Upgrades & repairs to paving Including parking lots & sidewalks!

✓ Updated electrical infrastructure & fire alarms for safety!